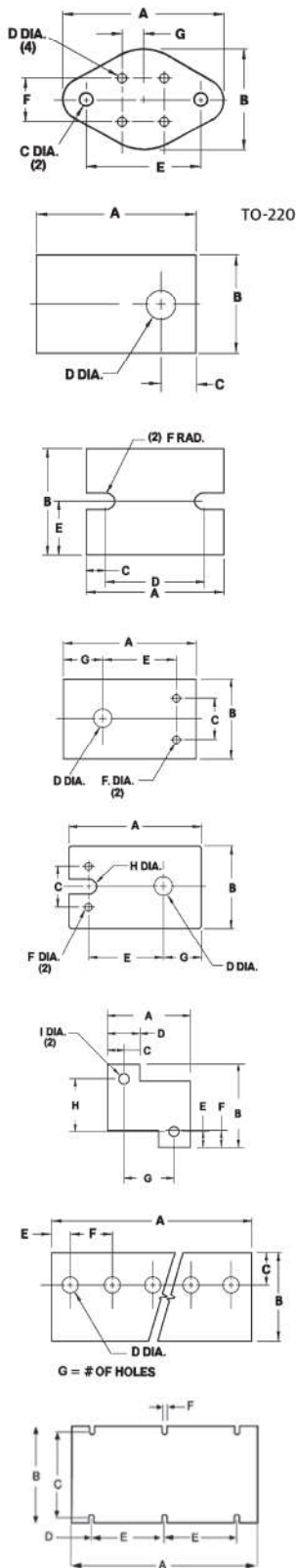


SIL PAD® Configurations

Imperial Measurements



4 LEAD TO-66	PART NUMBER SUFFIX	"A"	"B"	"C"	"D"	"E"	"F"	"G"
	-84	1.312	.762	.140	.062	.960	.200	.100

PLASTIC POWER	PART NUMBER SUFFIX	DIMENSIONS				PLASTIC POWER	PART NUMBER SUFFIX	DIMENSIONS			
		"A"	"B"	"C"	"D"			"A"	"B"	"C"	"D"
Various	-35	.710	.500	.160	.141	Various	-104	1.000	.750	.300	.140
(Clip Mount)	-43	.750	.500			Various	-107	.810	.910	.170	.147
TO-126	-50	.437	.312	.140	.093	Various	-110	.984	.787		
Various	-51	.687	.562	.218	.125	Various	-114	.827	.945	.197	.150
Various	-52	.855	.630	.230	.093	Various	-116	.855	.630	.228	.122
TO-220	-54	.750	.500	.187	.147	Various	-117	.827	.709	.256	.126
TO-202	-55	.610	.560	.245	.125	Various	-118	.748	.551	.217	.126
Various	-56	.855	.562	.218	.125	Various	-119	.437	.311	.142	.110
TO-220	-58	.750	.500	.187	.125	Various	-120	.728	.472	.157	.098
TO-126	-60	.437	.312	.140	.122	TO-3P	-122	1.140	.810	.355	.147
Various	-61	.750	.410	.225	.156	Various	-126	.945	.748	.256	.162
TO-220	-62	.750	.600	.240	.150	Various	-128	.984	1.654	.315	.157
Various	-63	.750	.600	.240	.115	Various	-131	.709	.512	.177	.122
Various	-64	.500	.385	.170	.120	Various	-132	.472	.315	.157	.126
TO-218	-68	1.125	.625	.200	.145	Various	-133	.866	.709	.256	.126
Various	-70	1.410	.810	.355	.147	Various	-134	.945	.709	.228	.126
Various	-90	.860	.740	.200	.160	Various	-136	1.250	1.000		
Various	-102	.866	.650	.217	.142	Various	-137	1.250	1.000	.258	.127
Various	-103	.750	.800	.150	.160	Various	-138	1.250	1.000	.258	.148

POWER MODULE	PART NUMBER SUFFIX	DIMENSIONS					
		"A"	"B"	"C"	"D"	"E"	"F"
	-67	1.500	.900	.150	1.200	.450	.075
	-101	2.500	2.000	.344	1.812	1.000	.156

PLASTIC POWER	PART NUMBER SUFFIX	DIMENSIONS						
		"A"	"B"	"C"	"D"	"E"	"F"	"G"
	-57	.910	.500	.200	.125	.580	.046	.265
	-89	.983	.750	.432	.156	.665	.101	.217

PLASTIC POWER	PART NUMBER SUFFIX	DIMENSIONS							
		"A"	"B"	"C"	"D"	"E"	"F"	"G"	"H"
	-66	1.000	.500	.200	.141	.626	.046	.219	.032

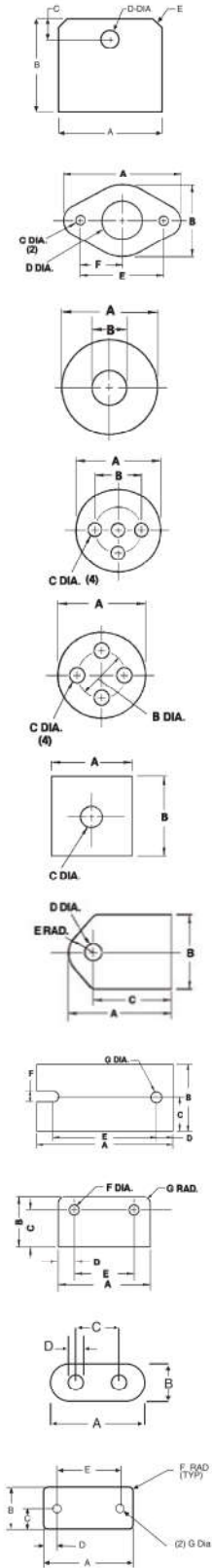
POWER RESISTORS	PART NUMBER SUFFIX	DIMENSIONS								
		"A"	"B"	"C"	"D"	"E"	"G"	"H"	"I"	
RH-25	-94	1.187	1.205	.234	.469	.212	.156	.719	.781	.140
RH-50	-95	2.093	1.265	.265	.530	.210	.255	1.563	.845	.140
RH-5	-96	.725	.771	.140	.280	.140	.156	.445	.491	.093
RH-10	-97	.805	.890	.127	.250	.130	.190	.551	.630	.121
RH-25	-98	1.150	1.180	.231	.425	.190	.270	.688	.800	.147
RH-50	-99	1.965	1.236	.198	.404	.132	.263	1.569	.972	.130

TO-220 MULTIPLES	PART NUMBER SUFFIX	DIMENSIONS							# OF HOLES
		"A"	"B"	"C"	"D"	"E"	"F"		
2 Parts	-34	1.000	.750	.187	.125	.250	.500	2	
3 Parts	-36	1.500	.750	.187	.125	.250	.500	3	
	-37	2.000	.750	.187	.125	.250	.500	4	
	-38	2.500	.750	.187	.125	.250	.500	5	
	-39	3.000	.750	.187	.125	.250	.500	6	
	-40	3.500	.750	.187	.125	.250	.500	7	
	-41	4.000	.750	.187	.125	.250	.500	8	

POWER MODULE	PART NUMBER SUFFIX	DIMENSIONS					
		"A"	"B"	"C"	"D"	"E"	"F"
	-108	4.600	2.400	2.125	.500	1.800	.125
	-140	4.598	2.402	2.098	0.500	1.799	0.150
	-141	2.279	2.402	2.102	0.488	0.650	0.150
	-142	2.280	1.450	1.270	0.490	0.650	0.130

SIL PAD® Configurations

Imperial Measurements



MULTIWATT	PART NUMBER SUFFIX	DIMENSIONS				
		"A"	"B"	"C"	"D"	"E"
	-124	.872	.790	.160	.148	.118 x 45°
	-125	.866	.787	.157	.154	.079 x 45°

MULTI-LEAD TO-66	PART NUMBER SUFFIX	DIMENSIONS					
		"A"	"B"	"C"	"D"	"E"	"F"
	-93	1.350	.800	.140	.400	.960	.480

DIODE WASHER	PART NUMBER SUFFIX	DIMENSIONS		DIODE WASHER	PART NUMBER SUFFIX	DIMENSIONS	
		"A"	"B"			"A"	"B"
Various	-19	.510	.140	Various	-75	.360	.260
DO-4	-20	.510	.200	Various	-76	.750	.125
DO-5	-21	.800	.260	Various	-77	.800	.190
DO-4 (oversized)	-22	.625	.200	DO-8	-78	.875	.313
DO-5 (oversized)	-25	1.000	.260	Various	-79	1.180	.515
Various	-26	.812	.145	Various	-80	1.250	.380
Various	-27	.812	.115	Various	-81	1.500	.200
Various	-28	1.000	.140	Various	-82	.512	.161
Various	-32	1.500	.500	Various	-111	.591	.217

TO-36	PART NUMBER SUFFIX	DIMENSIONS		
		"A"	"B"	"C"
	-08	1.063	.690	.190

SMALL POWER DEVICES	PART NUMBER SUFFIX	DIMENSIONS		
		"A"	"B"	"C"
TO-5, 3 Holes	-09	.360	.200	.040
TO-18, 3 Holes	-12	.250	.100	.036
TO-18, 4 Holes	-13	.250	.100	.036
TO-5, 4 Holes	-33	.360	.200	.040
TO-5, 3 Holes	-44	.390	.200	.040
TO-5, 4 Holes	-45	.390	.200	.040

RECTIFIER	PART NUMBER SUFFIX	DIMENSIONS		
		"A"	"B"	"C"
	-46	1.250	1.250	.200
	-47	1.125	1.125	.140
	-48	1.000	1.000	.187

TIP PACKAGES	PART NUMBER SUFFIX	DIMENSIONS				
		"A"	"B"	"C"	"D"	"E"
Clip Mount	-42	.984	.787			.205
TIP-36 Plastic Tip	-53	.865	.650	.650	.140	.205
TO-3P	-65	1.260	.787	.984	.142	.205
Plastic Clip	-73	.984	.787	.708	.142	.205

POWER MODULE	PART NUMBER SUFFIX	DIMENSIONS						
		"A"	"B"	"C"	"D"	"E"	"F"	"G"
	-100	2.510	1.260	.630	.305	1.900	.205	.205
	-123	1.614	1.102	.551	.157	1.220	.118	.118

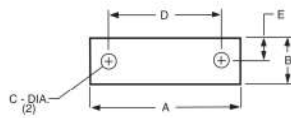
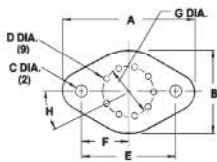
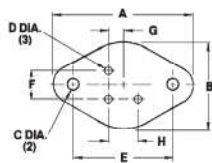
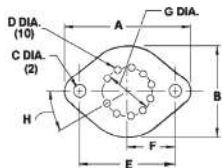
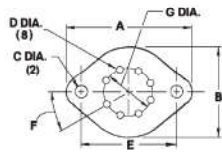
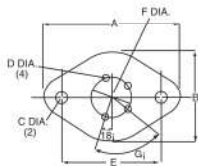
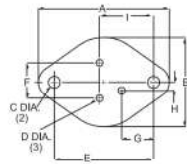
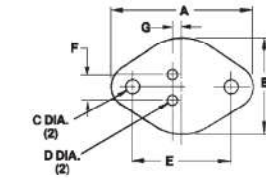
SIP PACKAGE	PART NUMBER SUFFIX	DIMENSIONS						
		"A"	"B"	"C"	"D"	"E"	"F"	"G"
	-105	1.450	.838	.612	.245	.960	.170	.120

QUARTZ	PART NUMBER SUFFIX	DIMENSIONS			
		"A"	"B"	"C"	"D"
	-115	.472	.197	.193	.031

POWER MODULE	PART NUMBER SUFFIX	DIMENSIONS						
		"A"	"B"	"C"	"D"	"E"	"F"	"G"
	-109	1.350	.642	.321	.195	.960	.060	.125

SIL PAD® Configurations

Imperial Measurements



		TO-3 & TO-66							
STYLE	PART NUMBER SUFFIX	DIMENSIONS							
		"A"	"B"	"C"	"D"	"E"	"F"	"G"	
	-02	1.780	1.250	.140	.093	1.187	.430	.072	
	-03	1.563	1.050	.140	.080	1.187	.430	.072	
	-04	1.650	1.140	.122	.062	1.187	.430	.072	
	-05	1.650	1.140	.140	.093	1.187	.430	.072	
	-06	1.650	1.140	.165	.062	1.187	.430	.072	
	-07	1.780	1.250	.165	.094	1.187	.430	.072	
	-10	1.440	1.000	.140	.075	.960	.200	.100	
	-11	1.312	.762	.140	.062	.960	.200	.100	
	-15	1.780	1.250	.140	.046	1.187	.430	.072	
	-16	2.070	1.560	.122	.062	1.187	.430	.072	
	-17	1.650	1.140	.140	.046	1.187	.430	.072	
	-18	1.563	1.050	.140	.140	1.187	.430	.072	
	-23	1.593	1.100	.156	.062	1.187	.430	.072	
	-24	1.700	1.187	.156	.062	1.187	.430	.072	
	-29	1.650	1.065	.140	.046	1.187	.430	.072	
	-30	1.250	.700	.140	.062	.960	.200	.100	
	-31	1.375	.825	.140	.062	.960	.200	.100	
	-59 Leadless	1.650	1.140	.165		1.187			
	-112	1.780	1.248	.165	.063	1.185	.429	.073	
	-113	1.563	1.051	.165	.079	1.185	.429	.073	
	-127	1.307	.819	.165	.063	.909	.236	.061	
	-129	1.654	1.063	.138	.059	1.181	.433	.071	
	-135	1.650	1.142	.165	.142	1.187	.429	.072	

3 LEAD TO-3		DIMENSIONS								
	PART NUMBER SUFFIX	"A"	"B"	"C"	"D"	"E"	"F"	"G"	"H"	"I"
	-92	1.650	1.140	.140	.093	1.187	.430	.400	.155	.718

4 LEAD TO-3		DIMENSIONS							
	PART NUMBER SUFFIX	"A"	"B"	"C"	"D"	"E"	"F"	"G"	
	-86	1.560	1.050	.156	.080	1.170	.470	72°	
	-87	1.563	1.050	.156	.063	1.187	.470	72°	

8 LEAD TO-3		DIMENSIONS						
	PART NUMBER SUFFIX	"A"	"B"	"C"	"D"	"E"	"F"	"G"
	-88	1.655	1.187	.156	.060	1.187	40°	.500

10 LEAD TO-3		DIMENSIONS								
	PART NUMBER SUFFIX	"A"	"B"	"C"	"D"	"E"	"F"	"G"	"H"	
	-91	1.650	1.140	.165	.040	1.187	.593	.500	32.7°	

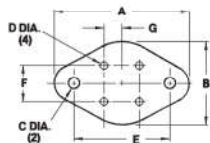
3 LEAD TO-66		DIMENSIONS							
	PART NUMBER SUFFIX	"A"	"B"	"C"	"D"	"E"	"F"	"G"	"H"
	-85	1.275	.750	.156	.100	.960	.200	.100	.200

9 LEAD TO-66		DIMENSIONS							
	PART NUMBER SUFFIX	"A"	"B"	"C"	"D"	"E"	"F"	"G"	"H"
	-83	1.440	1.000	.140	.055	.960	.480	.325	36°

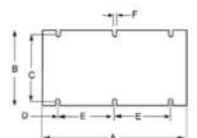
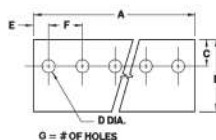
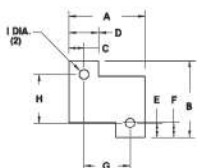
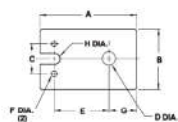
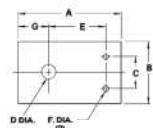
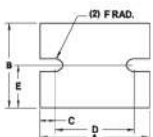
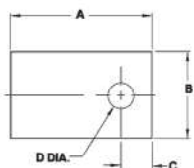
POWER MODULE		DIMENSIONS				
	PART NUMBER SUFFIX	"A"	"B"	"C"	"D"	"E"
	-130	1.600	.480	.165	1.197	.240

SIL PAD® Configurations

Metric Measurements



TO-220



		DIMENSIONS						
4 LEAD TO-66	PART NUMBER SUFFIX	"A"	"B"	"C"	"D"	"E"	"F"	"G"
	-84	33.32	19.35	3.56	1.57	24.38	5.08	2.54

PLASTIC POWER	PART NUMBER SUFFIX	DIMENSIONS				PLASTIC POWER	PART NUMBER SUFFIX	DIMENSIONS			
		"A"	"B"	"C"	"D"			"A"	"B"	"C"	"D"
Various (Clip Mount)	-35	18.03	12.70	4.06	3.58	Various	-104	25.40	19.05	7.62	3.56
	-43	19.05	12.70	Various	-107		20.57	23.11	4.32	3.73	
	TO-126	-50	11.10	7.92	3.56	2.36	Various	-110	24.99	19.99	
Various	-51	17.45	14.27	5.54	3.18	Various	-114	21.01	24.00	5.00	3.81
Various	-52	21.72	16.00	5.84	2.36	Various	-116	21.72	16.00	5.79	3.10
TO-220	-54	19.05	12.70	4.75	3.73	Various	-117	21.01	18.01	6.50	3.20
TO-202	-55	15.49	14.22	6.22	3.18	Various	-118	19.00	14.00	5.51	3.20
Various	-56	21.72	14.27	5.54	3.18	Various	-119	11.10	7.90	3.61	2.79
TO-220	-58	19.05	12.70	4.75	3.18	Various	-120	18.49	11.99	3.99	2.49
TO-126	-60	11.10	7.92	3.56	3.10	TO-3P	-122	28.96	20.57	9.02	3.73
Various	-61	19.05	10.41	5.72	3.96	Various	-126	24.00	19.00	6.50	4.11
TO-220	-62	19.05	15.24	6.10	3.81	Various	-128	24.99	42.01	8.00	3.99
Various	-63	19.05	15.24	6.10	2.92	Various	-131	18.01	13.00	4.50	3.10
Various	-64	12.70	9.78	4.32	3.05	Various	-132	11.99	8.00	3.99	3.20
TO-218	-68	28.58	15.88	5.08	3.68	Various	-133	22.00	18.01	6.50	3.20
Various	-70	35.81	20.57	9.02	3.73	Various	-134	24.00	18.01	5.79	3.20
Various	-90	21.84	18.80	5.08	4.06	Various	-136	31.75	25.40		
Various	-102	22.00	16.51	5.51	3.61	Various	-137	31.75	25.40	6.55	3.23
Various	-103	19.05	20.32	3.81	4.06	Various	-138	31.75	25.40	6.55	3.76

		DIMENSIONS					
POWER MODULE	NUMBER SUFFIX	"A"	"B"	"C"	"D"	"E"	"F"
	-67	38.10	22.86	3.81	30.48	11.43	1.90
	-101	63.50	50.80	8.74	46.02	25.40	3.96

		DIMENSIONS						
PLASTIC POWER	PART NUMBER SUFFIX	"A"	"B"	"C"	"D"	"E"	"F"	"G"
	-57	23.11	12.70	5.08	3.18	14.73	1.17	6.73
	-89	24.97	19.05	10.97	3.96	16.89	2.57	5.51

		DIMENSIONS							
PLASTIC POWER	PART NUMBER SUFFIX	"A"	"B"	"C"	"D"	"E"	"F"	"G"	"H"
	-66	25.40	12.70	5.08	3.58	15.90	1.17	5.56	0.81

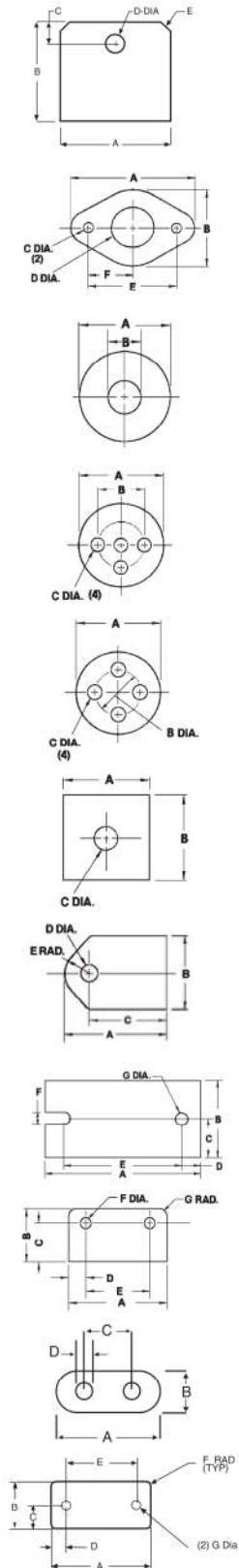
		DIMENSIONS									
POWER RESISTORS	PART NUMBER SUFFIX	"A"	"B"	"C"	"D"	"E"	"F"	"G"	"H"	"I"	
RH-25	-94	30.15	30.61	5.94	11.91	5.38	3.96	18.26	19.84	3.56	
RH-50	-95	53.16	32.13	6.73	13.46	5.33	6.48	39.70	21.46	3.56	
RH-5	-96	18.42	19.58	3.56	7.11	3.56	3.96	11.30	12.47	2.36	
RH-10	-97	20.45	22.61	3.23	6.35	3.30	4.83	14.00	16.00	3.07	
RH-25	-98	29.21	29.97	5.87	10.80	4.83	6.86	17.48	20.32	3.73	
RH-50	-99	49.91	31.39	5.03	10.26	3.35	6.68	39.85	24.69	3.30	

		DIMENSIONS							# OF HOLES
TO-220 MULTIPLES	PART NUMBER SUFFIX	"A"	"B"	"C"	"D"	"E"	"F"		
2 Parts	-34	25.40	19.05	4.75	3.18	6.35	12.70	2	
3 Parts	-36	38.10	19.05	4.75	3.18	6.35	12.70	3	
	-37	50.80	19.05	4.75	3.18	6.35	12.70	4	
	-38	63.50	19.05	4.75	3.18	6.35	12.70	5	
	-39	76.20	19.05	4.75	3.18	6.35	12.70	6	
	-40	88.90	19.05	4.75	3.18	6.35	12.70	7	
	-41	101.60	19.05	4.75	3.18	6.35	12.70	8	

		DIMENSIONS					
POWER MODULE	PART NUMBER SUFFIX	"A"	"B"	"C"	"D"	"E"	"F"
	-108	116.84	60.96	53.97	12.70	45.72	3.18
	-140	116.8	61.00	53.30	12.70	45.70	3.80
	-141	57.90	61.00	53.40	12.40	16.50	3.80
	-142	57.91	36.83	32.26	12.45	16.50	3.30

SIL PAD® Configurations

Metric Measurements



MULTIWATT	PART NUMBER SUFFIX	DIMENSIONS				
		"A"	"B"	"C"	"D"	"E"
	-124	22.15	20.07	4.06	3.76	3.0 x 45°
	-125	22.00	19.99	3.99	3.91	2.0 x 45°

MULTI- LEAD TO-66	PART NUMBER SUFFIX	DIMENSIONS					
		"A"	"B"	"C"	"D"	"E"	"F"
	-93	34.29	20.32	3.56	10.16	24.38	12.19

DIODE WASHER	PART NUMBER SUFFIX	DIMENSIONS		DIODE WASHER	PART NUMBER SUFFIX	DIMENSIONS	
		"A"	"B"			"A"	"B"
Various	-19	12.95	3.56	Various	-75	9.14	6.60
DO-4	-20	12.95	5.08	Various	-76	19.05	3.18
DO-5	-21	20.32	6.60	Various	-77	20.32	4.83
DO-4 (oversized)	-22	15.88	5.08	DO-8	-78	22.23	7.95
DO-5 (oversized)	-25	25.40	6.60	Various	-79	29.97	13.08
Various	-26	20.62	3.68	Various	-80	31.75	9.65
Various	-27	20.62	2.92	Various	-81	38.10	5.08
Various	-28	25.40	3.56	Various	-82	13.00	4.09
Various	-32	38.10	12.70		-111	15.01	5.51

TO-36	PART NUMBER SUFFIX	DIMENSIONS		
		"A"	"B"	"C"
	-08	27.00	17.53	4.83

SMALL POWER DEVICES	PART NUMBER SUFFIX	DIMENSIONS		
		"A"	"B"	"C"
TO-5, 3 Holes	-09	9.14	5.08	1.02
TO-18, 3 Holes	-12	6.35	2.54	0.91
TO-18, 4 Holes	-13	6.35	2.54	0.91
TO-5, 4 Holes	-33	9.14	5.08	1.02
TO-5, 3 Holes	-44	9.91	5.08	1.02
TO-5, 4 Holes	-45	9.91	5.08	1.02

RECTIFIER	PART NUMBER SUFFIX	DIMENSIONS		
		"A"	"B"	"C"
	-46	31.75	31.75	5.08
	-47	28.58	28.58	3.56
	-48	25.40	25.40	4.75

TIP PACKAGES	PART NUMBER SUFFIX	DIMENSIONS				
		"A"	"B"	"C"	"D"	"E"
Clip Mount	-42	24.99	19.99	5.21		
TIP-36 Plastic Tip	-53	21.97	16.51	16.51	3.56	5.21
TO-3P	-65	32.00	19.99	24.99	3.61	5.21
Plastic Clip	-73	24.99	19.99	17.98	3.61	5.21

POWER MODULE	PART NUMBER SUFFIX	DIMENSIONS						
		"A"	"B"	"C"	"D"	"E"	"F"	"G"
	-100	63.75	32.00	16.00	7.75	48.26	5.21	5.21
	-123	41.00	27.99	14.00	3.99	30.99	3.00	3.00

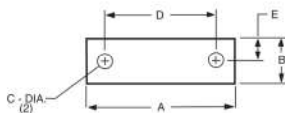
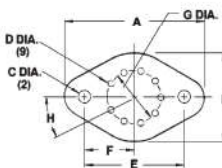
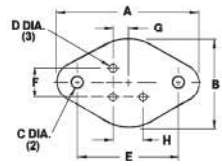
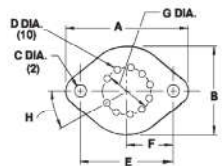
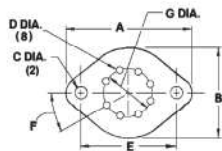
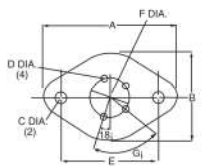
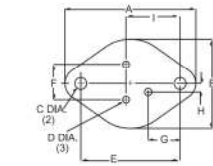
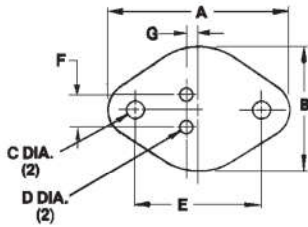
SIP PACKAGE	PART NUMBER SUFFIX	DIMENSIONS						
		"A"	"B"	"C"	"D"	"E"	"F"	"G"
	-105	36.83	21.29	15.54	6.22	24.38	4.32	3.05

POWER MODULE	PART NUMBER SUFFIX	DIMENSIONS			
		"A"	"B"	"C"	"D"
	-115	11.99	5.00	4.90	0.79

POWER MODULE	PART NUMBER SUFFIX	DIMENSIONS						
		"A"	"B"	"C"	"D"	"E"	"F"	"G"
	-109	34.29	16.31	8.15	4.95	24.38	1.52	3.18

SIL PAD® Configurations

Metric Measurements



TO-3 STYLE	PART NUMBER SUFFIX	DIMENSIONS						
		"A"	"B"	"C"	"D"	"E"	"F"	"G"
	-02	45.21	31.75	3.56	2.36	30.15	10.92	1.83
	-03	39.70	26.67	3.56	2.03	30.15	10.92	1.83
	-04	41.91	28.96	3.10	1.57	30.15	10.92	1.83
	-05	41.91	28.96	3.56	2.36	30.15	10.92	1.83
	-06	41.91	28.96	4.19	1.57	30.15	10.92	1.83
	-07	45.21	31.75	4.19	2.39	30.15	10.92	1.83
	-10	36.58	25.40	3.56	1.90	24.38	5.08	2.54
	-11	33.32	19.35	3.56	1.57	24.38	5.08	2.54
	-15	45.21	31.75	3.56	1.17	30.15	10.92	1.83
	-16	52.58	39.62	3.10	1.57	30.15	10.92	1.83
	-17	41.91	28.96	3.56	1.17	30.15	10.92	1.83
	-18	39.70	26.67	3.56	3.56	30.15	10.92	1.83
	-23	40.46	27.94	3.96	1.57	30.15	10.92	1.83
	-24	43.18	30.15	3.96	1.57	30.15	10.92	1.83
	-29	41.91	27.05	3.56	1.17	30.15	10.92	1.83
	-30	31.75	17.78	3.56	1.57	24.38	5.08	2.54
	-31	34.92	20.96	3.56	1.57	24.38	5.08	2.54
	-59 Leadless	41.91	28.96	4.19		30.15		
	-112	45.21	31.70	4.19	1.60	30.10	10.90	1.85
	-113	39.70	26.70	4.19	2.01	30.10	10.90	1.85
	-127	33.20	20.80	4.19	1.60	23.09	5.99	1.55
	-129	42.01	27.00	3.51	1.50	30.00	11.00	1.80
	-135	41.91	29.01	4.19	3.61	30.15	10.90	1.83

3 LEAD TO-3	PART NUMBER SUFFIX	DIMENSIONS								
		"A"	"B"	"C"	"D"	"E"	"F"	"G"	"H"	"I"
	-92	41.91	28.96	3.56	2.36	30.15	10.92	10.16	3.94	18.24

4 LEAD TO-3	PART NUMBER SUFFIX	DIMENSIONS						
		"A"	"B"	"C"	"D"	"E"	"F"	"G"
	-86	39.62	26.67	3.96	2.03	29.72	11.94	72°
	-87	39.70	26.67	3.96	1.60	30.15	11.94	72°

8 LEAD TO-3	PART NUMBER SUFFIX	DIMENSIONS						
		"A"	"B"	"C"	"D"	"E"	"F"	"G"
	-88	42.04	30.15	3.96	1.52	30.15	40°	12.70

10 LEAD TO-3	PART NUMBER SUFFIX	DIMENSIONS							
		"A"	"B"	"C"	"D"	"E"	"F"	"G"	"H"
	-91	41.91	28.96	4.19	1.02	30.15	15.06	12.70	32.7°

3 LEAD TO-66	PART NUMBER SUFFIX	DIMENSIONS							
		"A"	"B"	"C"	"D"	"E"	"F"	"G"	"H"
	-85	32.38	19.05	3.96	2.54	24.38	5.08	2.54	5.08

9 LEAD TO-66	PART NUMBER SUFFIX	DIMENSIONS							
		"A"	"B"	"C"	"D"	"E"	"F"	"G"	"H"
	-83	36.58	25.40	3.56	1.40	24.38	12.19	8.26	36°

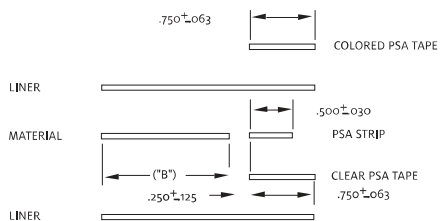
POWER MODULE	PART NUMBER SUFFIX	DIMENSIONS				
		"A"	"B"	"C"	"D"	"E"
	-130	40.64	12.19	4.19	30.40	6.10

HI-FLOW Configurations

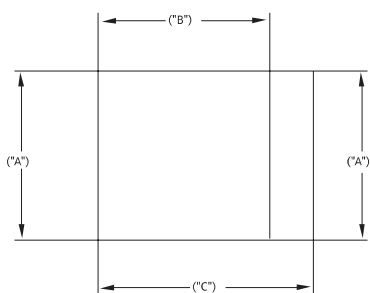
Formerly known as HI-FLOW 225UT/565UT

Imperial Measurements

BERGQUIST® HI-FLOW THF 700FT/BERGQUIST® HI-FLOW THF 3000UT Tab Configurations



PART NUMBER SUFFIX	DIMENSIONS (± .015)			MIN. PCS./ROLL
	"A"	"B"	"C"	
-150	1.650	1.650	2.650	3,000
-151	1.500	1.500	2.500	5,000
-152	1.375	1.375	2.375	5,000
-153	1.250	1.250	2.250	5,000
-154	1.000	1.000	2.000	7,500
-155	.700	.700	1.700	10,000
-156	.500	.500	1.500	15,000

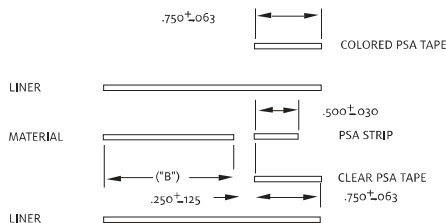


HI-FLOW Configurations

Formerly known as HI-FLOW 225UT/565UT

Metric Measurements

BERGQUIST® HI-FLOW THF 700FT/BERGQUIST® HI-FLOW THF 3000UT Tab Configurations



PART NUMBER SUFFIX	DIMENSIONS (± .015)			MIN. PCS./ROLL
	"A"	"B"	"C"	
-150	41.91	41.91	67.31	3,000
-151	38.10	38.10	63.50	5,000
-152	34.93	34.93	60.33	5,000
-153	31.75	31.75	57.15	5,000
-154	25.40	25.40	50.80	7,500
-155	17.78	17.78	43.18	10,000
-156	12.70	12.70	38.10	15,000

